

# Hitchcock Center for the Environment

Education for a Healthy Planet



## ANNUAL REPORT 2009

525 S. Pleasant Street  
Amherst, Massachusetts 01002  
(413) 256-6006  
Fax: (413) 253-2809  
[hcenter@crocker.com](mailto:hcenter@crocker.com)  
[www.hitchcockcenter.org](http://www.hitchcockcenter.org)



The Hitchcock Center for the Environment's mission is to foster a greater awareness and understanding of our environment and to develop environmentally literate citizens.

## BOARD OF DIRECTORS

Judith Espinola, *President*  
Janice Gifford, *Vice President*  
Jan Albano, *Treasurer*  
Ann Romberger, *Clerk*  
Penny Beebe  
Jim Brassord  
Jaana Cutson  
Michael Dover  
Judith Espinola  
Charles Haight  
Caroline Hanna  
Bill Hart  
Aaron Hayden  
Martha Hoopes  
John Kowaleski  
Dennis McKenna  
Mark Protti  
Bob Saul  
Sonya Sofield  
Dano Weisbord  
Pete Westover  
Harvey Allen (Ex-Officio),  
*Amherst Conservation Committee Liaison*

## ADVISORY COUNCIL

Joanna Brown  
Don Kroodsma  
Lynn Margulis  
Lorna Peterson  
Senator Stan Rosenberg  
Lauret Savoy  
Representative Ellen Story  
Mary Taft

## STAFF

Julie Johnson, *Executive Director*  
Casey Beebe, *Environmental Educator*  
Ruth Courtneil, *Bookkeeper*  
Susan Heitker, *Center Coordinator*  
Colleen Kelley, *Environmental Educator*  
Micky McKinley, *Environmental Educator*  
Helen Ann Sephton, *Environmental Educator*  
Ted Watt, *Environmental Educator*

Rebecca Reid, *Educator/Photographer*, funded by a special grant through the Proteus Fund.

### Seasonal/Temporary:

Emlyn Bean, *Vacation Camp Counselor*  
Alia Hinds, *Vacation Camp Counselor*  
Katie Koerten, *Vacation Camp Counselor*  
Seal LaMadeleine, *Homeschool/Preschool Instructor*  
Julia Max, *Summer & Vacation Camp Counselor*  
Patty O'Donnell, *Field Trip Educator*  
Chad Odwazny, *Vacation Camp Counselor*  
Kaitlyn Sephton, *Summer Camp Counselor*  
Rachel Teumim, *Vacation Camp Counselor*  
Nicole Truman, *Summer Camp Counselor*  
Pesha Wasserstrom, *Summer Camp Counselor*  
Jennifer Unkles, *Field Trip Educator*



Spring campers visiting the animal barn at Bramble Hill Farm.

**This Annual Report is for Fiscal Year 2009 (FY09), which spans July 1, 2008 through June 30, 2009.**



# FROM THE EXECUTIVE DIRECTOR

---

Dear Friend,

Our nation's future relies on a well-educated public to be wise stewards of the very environment that sustains us, our families and communities, and future generations. It is environmental education which can best help us as individuals make the complex, conceptual connections between economic prosperity, benefits to society, environmental health, and our own well being.

Environmental literacy has made tremendous progress since 1970, securing inroads within the nation's formal and informal educational systems. Today, nearly two-thirds of the nation's 2.5 million K-12 teachers include environmental education in their classrooms, and the majority of all students at over half of all colleges take an environmental course—just two examples of the broad reach of environmental education. More recently, the American Recovery and Reinvestment Act of 2009 (ARRA) has established an unprecedented, sweeping effort to jumpstart our economy through green investments that enable our nation to become more energy efficient, environmentally sustainable and economically secure.

This momentum has enabled many outstanding model programs to be developed and, consequently, has exposed millions of Americans to a positive environmental education experience. Yet, despite this exposure to environmental education, the grim reality is this: Americans still widely lack the environmental knowledge that would enable them to safeguard public health, protect natural areas, support energy conservation efforts, and engage in the movement towards a more sustainable future.

How is this possible given that more environmental education is happening now than nearly 40 years ago? In general, the belief that nature is ours to exploit is very deeply rooted and pervasive not only within American society but within most academic disciplines and subjects as well.

The Hitchcock Center for the Environment works diligently to dispel this deeply rooted belief system through a concerted, systematic approach to environmental education. The test of whether we have met our goal toward achieving an environmental literacy is the capacity of an individual to act successfully in daily life on a broad understanding of how people and societies relate to each other and natural systems, and how they might do so sustainably.

In the pages of this report, you will find numerous examples of how the Hitchcock Center's School and Community Programs provide sufficient awareness, knowledge, skills and attitudes for people to incorporate appropriate environmental considerations into daily decisions about consumption, lifestyle, career, and civics, and to engage in individual and collective action.

In the coming decades, the public will more frequently be called upon to understand complex environmental issues, assess risk, evaluate proposed environmental plans and understand how individual decisions affect the environment at local and global scales. Together, we can prepare people for this future. But we can't do it without you.

In this report, we welcome the opportunity to recognize the invaluable role that our members, volunteers, donors, sponsors, funders, educators, and advocates have played in furthering the cause of environmental literacy in the Pioneer Valley. Your gift of time, expertise, knowledge, passion, dedication, skill, and resources have strengthened and solidified environmental education as a priority in this community. We celebrate our accomplishments together in this report.



With warmest regards,

  
Julie Johnson  
Executive Director



# SCHOOL PROGRAMS • FY09 SNAPSHOTS

## RENEWABLE ENERGY EDUCATION PROJECT



Hitchcock Center educator Micky McKinley worked with 85 elementary and middle school students in Springfield and Northampton helping them to better understand renewable energy resources, including the scientific and technological concepts of renewable energy, through hands-on activities.

## CHICOPEE NATURALIST-IN-RESIDENCE PROJECT



Hitchcock Center educator Helen Ann Sephton spent 16 weeks at the P.E. Bowe School in Chicopee, MA, assisting 68 second grade students to learn about the natural world outside their school through nature journaling and inquiry-based field investigations.

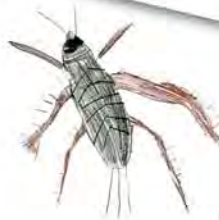
## NORTHAMPTON NATURALISTS-IN-RESIDENCE PROJECT



Hitchcock Center educator Ted Watt has spent the last 2 years working intensively with the teachers and students at the Ryan Road School in Northampton, MA, to develop and implement grade-specific, standards-based curriculum that integrates the outdoor school grounds into daily exploration and instruction.

*"When we were considering issues that contribute to the achievement gap, we found that kids and parents had one thing in common—the thirst for nature and outdoor learning... It's been incredibly exciting for us. Every single teacher has dived into this [project]. I've noticed the children growing in empathy for nature and each other."*

*Margie Riddle  
Principal  
Ryan Road Elementary School*





# SCHOOL PROGRAMS • FY09 SNAPSHOTS

## HOLYOKE CREATIVE SCHOOL PROJECT



With funding from the Massachusetts Cultural Council's Creative Schools Program, the Hitchcock Center partnered with the Enchanted Circle Theater to strengthen science inquiry skills among 235 Holyoke students through integrated arts and science projects.

## MUSEUM INSTITUTE FOR TEACHING SCIENCE



Hitchcock Center educators Helen Ann Sephton and Micky McKinley provided a 2-day summer training institute on July 8-9 for teachers wanting to strengthen their science instruction using the outdoor classroom.

## WATER CONSERVATION AND GROUNDWATER EDUCATION PROJECT



Funded through Amherst's Department of Public Works, over 900 elementary schoolchildren in the Amherst Public School District learned about the importance of water resources in their community.

## UMASS SCIENCE METHODS SEMINAR



Hitchcock Center educator Micky McKinley taught a Science Methods seminar for 15 graduate students training to be teachers through the UMASS School of Education.





# SCHOOL PROGRAMS • FY09 SNAPSHOTS

## GEOLOGY FIELD TRIP



Hitchcock Center educator Ted Watt leads sixth grade students from Amherst up Mount Holyoke on a Geology Field trip at Skinner State Park.

## SCHEFFIELD SCHOOL BIKE PATH CURRICULUM PROJECT

Plants		Animals	
	Canada Mayflower		Cricket
	Fern		Pillbug
	Maple		Walking stick
	Virginia Creeper		Praying mantis
	Jack-in-the-pulpit		Snail

Hitchcock Center educator Colleen Kelley worked with over 60 first grade students and teachers to develop a field guide and place-based curriculum that used the nearby Canalside Rail Trail as a resource for outdoor exploration and learning.

"Dear Helen Ann,  
Thank you so much for an amazing insect investigations program. Our first grade class learned so much and had such a great time. Your workshop is engaging, lively, and thoroughly educational. Thank you for such a successful field trip.  
Much Appreciation,  
Mary Franck"

FIRST GRADE TEACHER  
PEPIN ELEMENTARY SCHOOL, EASTHAMPTON, MA  
40 KIDS, 2 CLASSES

## INSECT INVESTIGATIONS FIELD TRIP



Over 400 elementary students learned about entomology and discovered what scientists have learned from insects through our popular Insect Investigations field trip on the beautiful 20-acre Larch Hill Conservation Area where the Hitchcock Center is based in Amherst, MA.





# SCHOOL PROGRAMS • FY09 SNAPSHOTS

## ATLANTIC SALMON RESTORATION PROJECT



In partnership with the Richard Cronin National Salmon Station, over 300 fifth grade students participated in community-service learning projects to help restore threatened Atlantic Salmon.

## SCIENCE INQUIRY INVESTIGATION



Led by Hitchcock Center educator, Micky McKinley, students at Northfield Elementary conducted a pillbug investigation to test their scientific inquiry skills.

## LIFE IN A POND



Over 500 elementary students inventoried macroinvertebrates and other species as part of Hitchcock Center's Life in a Pond school field trip program.





# SCHOOL PROGRAMS • FY09 SUMMARY

Using hands-on, real-world learning experiences, our School Programs teach about ecological patterns, systems of causation, and the long-term effects of human actions on those patterns.  
(Programs listed below include the grade level and numbers served in parentheses.)

## FIELD TRIPS

### **Forest Ecology:**

Sept. 25 Smith Campus School/Northampton (Gr.1-40)

April 30 Smith Campus School/Northampton (Gr.1-40)

### **Schoolyard Forest Ecology:**

Oct. 8 Plains School/South Hadley (Gr.1-40)

Oct. 10 Plains School/South Hadley (Gr.1-40)

Oct. 15 Plains School/South Hadley (Gr.1-40)

Oct. 16 Plains School/South Hadley (Gr.1-40)

### **Salmon Survival:**

Oct. 10 Sunderland Elementary/Sunderland (Gr.5-32)

### **Mountains and Valleys:**

Oct. 22 Hawlemont Elementary/Charlemont (Gr.4-18)

May 6 Whately Elementary School/Whately (Gr.5-18)

June 10 Pepin School/Easthampton (Gr.4-40)

June 11 Pepin School/Easthampton (Gr.4-40)

June 19 Lincoln School/Springfield (Gr.4-67)

### **Animals in Winter:**

Jan. 27 Plains School/South Hadley (Gr.1-80)

Jan. 28 Plains School/South Hadley (Gr.1-80)

Jan. 29 Amherst Montessori School/Amherst (Gr.K-6)

Jan. 30 Common School/Amherst (Gr.1,2-22)

Feb. 2 P.E. Bowe School/Chicopee (Gr.2-46)

Feb. 3 P.E. Bowe School/Chicopee (Gr.2-23)

Feb. 4 Plains School/South Hadley (Gr.1-40)

Feb. 5 Plains School/South Hadley (Gr.1-40)

Feb. 11 Plains School/South Hadley (Gr.1-40)

Feb. 12 Plains School/South Hadley (Gr.1-40)

Feb. 10 Bement School/Deerfield (Gr.1-19)

### **Technology of Winter:**

Jan. 7 William E. Norris School/Granby (Gr.2-40)

Jan. 8 William E. Norris School/Granby (Gr.2-40)

### **Amazing Animal Adaptations:**

May 12 Gill Elementary School/Gill (Gr.K,1,2-64)

### **Great Falls Discovery Center: Wildlife and Water:**

May 26 Bridge Street School/Northampton (Gr.4-54)

### **Insect Investigations:**

May 7 Pepin Elementary School/Easthampton (Gr.1-40)

May 8 Bement School/Deerfield (Gr.2-40)

May 28 Margaret C. Ellis School/Springfield (Gr.K-34)

June 3 Mark's Meadow School/Amherst (Gr.K-22)

June 8 Pioneer Valley Chinese Immersion Charter School/  
Amherst (Gr.1,2-45)

June 15 Tatham Elementary School/West Springfield (Gr.1-40)

### **Life in a Pond:**

May 6 St. Joan of Arc/St. George School/Chicopee (Gr.K-40)

May 12 Plains School/South Hadley (Gr.1-80)

May 13 Plains School/South Hadley (Gr.1-80)

May 13 Bridge Street School/Northampton (Gr.1-33)

May 14 Plains School/South Hadley (Gr.1-40)

May 18 Plains School/South Hadley (Gr.1-40)

May 20 Plains School/South Hadley (Gr.1-40)

May 23 Plains School/South Hadley (Gr.1-40)

May 27 Stonyhill School/Wilbraham (Gr.3-41)

May 29 Stonyhill School/Wilbraham (Gr.3-20)

June 1 Pioneer Valley Chinese Immersion Charter School/  
Amherst (Gr.K-39)

June 16 Deerfield Elementary/Deerfield (Gr.K-23)

June 18 Warwick Community School/Warwick (Gr.Pre-K-2-25)

June 22 Center School/Longmeadow (Gr.1-42)

June 23 Center School/Longmeadow (Gr.1-42)

June 24 Deerfield Elementary/Deerfield (Gr.K-46)

### **Habitat Studies:**

April 7 Frederick Harris School/Springfield (Gr.3-96)

April 15 Frederick Harris School/Springfield (Gr.3-48)

April 16 Frederick Harris School/Springfield (Gr.3-48)

May 15 Hatfield Elementary School/Hatfield (Gr.2-21)

June 4 St. Stanislaus School/Chicopee (Gr.1-37)

### **Small Animals:**

June 9 Buckland-Shelburne Elementary School/  
Shelburne Falls (Gr.K,1-30)





# SCHOOL PROGRAMS • FY09 SUMMARY

## CLASSROOM PRESENTATIONS

### **Amazing Animal Adaptations:**

Jan. 26 Blueberry Hill School/Longmeadow (Gr.1-90)  
April 28 Warwick Community School/Warwick (Gr.K-6 – 100)

### **Animals of Massachusetts:**

April 10 Crocker Farm School/Amherst (Gr.3-35)

### **Small Animals in the Classroom:**

July 17 Ware Middle School/Ware (Gr.1-4-55)  
Sept. 22 R.H.Conwell Elementary School/  
Worthington (Gr.K-4 – 60)

Dec. 11 Big Brothers, Big Sisters/Springfield (Gr.4&5-20)

Jan. 15 Big Brothers, Big Sisters/Springfield (Gr.4&5-20)

May 18 Newton School/Greenfield (Gr.K-2-85)

May 28 Newton School/Greenfield (Gr.1-3-80)

June 5 Crocker Farm School/Amherst (Gr.K-18)

June 18 Whately Elementary School/Whately (Gr.K-15)

### **Life in a Pond:**

June 12 Conway Grammar School/Conway (Gr.K-20)

June 17 E.N.White School/Holyoke (Gr.4-40)

### **Wild About Water:**

June 16 New Hingham Elementary School/Chesterfield (Gr.4-18)

### **Energy Investigations:**

June 16 New Hingham Elementary School/Chesterfield (Gr.4-18)

### **Water Quality in the Fort River:**

Sept. 29, Oct. 2 & 3 The Common School (Gr.5,6 –22)

## AMHERST GROUNDWATER/WATER CONSERVATION PROJECT

### **Ground Water Education (Grade 4):**

Dec. 2 Wildwood School/Amherst (42)  
Dec. 4 Pelham School/Pelham (21)  
Dec. 4 Wildwood School/Amherst (21)  
Dec. 9 Fort River School/Amherst (43)  
Dec. 11 Fort River School/Amherst (41)  
Dec. 16 Crocker Farm School/Amherst (43)  
Dec. 18 Mark's Meadow School/Amherst (21)

### **Ground Water Education (Grade 6):**

Mar. 3 Crocker Farm School/Amherst (40)  
Mar. 5 Mark's Meadow School/Amherst (43)  
Mar. 10 Pelham School/Pelham (18)  
Mar. 11 Wildwood School/Amherst (22)  
Mar. 12 Wildwood School/Amherst (44)  
Mar. 17 Fort River School/Amherst (43)  
Mar. 19 Fort River School/Amherst (43)

### **Water Conservation (Grade 2):**

Nov. 5 Crocker Farm School/Amherst (43)  
Nov. 6 Pelham School/Pelham (21)  
Nov. 6 Fort River School/Amherst (22)  
Nov. 12 Fort River School/Amherst (41)  
Nov. 13 Wildwood school/Amherst (43)  
Nov. 19 Wildwood school/Amherst (20)  
Nov. 20 Mark's Meadow School/Amherst (23)

### **Water Conservation (Grade 5):**

Jan. 6 Fort River School/Amherst (41)  
Jan. 8 Pelham School/Pelham (20)  
Jan. 8 Fort River School/Amherst (22)  
Jan. 13 Wildwood School/Amherst (41)  
Jan. 15 Wildwood School/Amherst (22)  
Jan. 20 Crocker Farm School/Amherst (22)  
Jan. 21 Crocker Farm School/Amherst (21)  
Jan. 22 Mark's Meadow School/Amherst (42)



Winter scene at the Bramble Hill Farm.

## ECOBUS PROGRAM

### **Geology of the Pioneer Valley (Grade 6):**

Oct. 1 Crocker Farm School/Amherst (Gr.6-43)  
Oct. 2 Pelham School/Pelham (Gr.6-24)  
Oct. 7 Fort River School/Amherst (Gr.6-44)  
Oct. 8 Fort River School/Amherst (Gr.6-46)  
Oct. 14 Mark's Meadow School/Amherst (Gr.6-45)  
May 19 Wildwood School/Amherst (Gr.6-65)

### **Atlantic Salmon Restoration Project (Grade 5):**

April 6 Crocker Farm School/Amherst (43)  
April 7 Crocker Farm School/Amherst (21)  
April 8 Crocker Farm School/Amherst (20)  
April 13 Pelham School/Pelham (20)  
April 13 Fort River School/Amherst (42)  
April 14 Pelham School/Pelham (21)  
April 15 Fort River School/Amherst (23)  
April 16 Fort River School/Amherst (21)  
April 27 Wildwood/Amherst (65)  
April 28 Wildwood School/Amherst (21)  
April 29 Wildwood School/Amherst (23)  
April 30 Wildwood School/Amherst (21)  
May 4 Mark's Meadow School/Amherst (46)  
May 4 Fort River School/Amherst (22)  
May 5 Mark's Meadow School/Amherst (23)  
May 6 Mark's Meadow School/Amherst (23)  
May 7 Fort River School/Amherst (22)



# SCHOOL PROGRAMS • FY09 SUMMARY

## **SCHEFFIELD ELEMENTARY SCHOOL— BIKE PATH CURRICULUM**

Nov. 13 Scheffield School/Turner's Falls (Gr. 1–66)  
Nov. 19 Scheffield School/Turner's Falls (Gr. 1–66)  
Jan. 15 Scheffield School/Turner's Falls (Gr. 1–66)  
Feb. 26 Scheffield School/Turner's Falls (Gr. 1–66)  
Mar. 26 Scheffield School/Turner's Falls (Gr. 1–66)  
April 30 Scheffield School/Turner's Falls (Gr. 1–66)  
June 6 Scheffield School/Turner's Falls (Gr. 1–66)

## **PROFESSIONAL DEVELOPMENT & SPECIAL PROJECTS**

July 8 & 9 **Museum Institute for Teaching Science**, Hitchcock Center/Amherst (9 teachers, 2 days, 12 hrs.)  
Sept. 17–Oct. 30 **Early Childhood Small Wonders Nature Program**, Union 38/Erving (12 teachers, 12 mtgs., 12 hrs.)  
Sept. 24 **The Nature of Fall in Your Backyard**, Childcare Outlook/Greenfield (25 teachers, 2 hrs.)  
Oct. 2–30 **Science Inquiry Methods Seminar**, Mt. Holyoke College/South Hadley (15 pre-service teachers, 5 mtgs., 15 hrs.)  
Nov. 12 **Fundamentals of Inquiry**, Westfield State College/Westfield (26 teachers, 2 hrs.)  
Dec. 2 **The Nature of Winter in Your Backyard**, Childcare Outlook/Greenfield (25 teachers, 2 hrs.)  
Dec. 2 & Jan. 27 **ELT Climate Change Program**, Greening Greenfield/Greenfield (5 teachers, 4 hrs.)  
Jan. 14, 21 & 28 **Using Trade Books: Connecting Science and Literature**, Rowe Elementary/Rowe (8 teachers, 10 hrs.)  
Feb. 13 & 15 **ELT Climate Change Program**, Greening Greenfield/Greenfield (6 teachers, 3 hrs.)  
Mar. 10–Apr. 1 **Science Methods**, UMass Education Department/Amherst (33 pre-service teachers, 6 mtgs., 15 hrs.)  
Mar. 18 **Early Childhood Water Workshop**, Union 38/Leverett (15 teachers, 2 hrs.)  
Mar. 20 **Fundamentals of Inquiry**, Chicopee Public Schools/Chicopee (20 teachers, 7 hrs.)  
April 2–June 4 **Outdoors After School**, Sunderland Elementary School/Sunderland (12 students, 8 mtgs., 8 hrs.)  
Apr. 19 **Energy Connections Workshop**, UMass Education Department/Amherst (9 teachers, 2.5 hrs.)  
Apr. 28 **The Nature of Spring in Your Backyard**, Childcare Outlook/Greenfield (20 teachers, 2 hrs.)  
Apr. 29–13 **Geology and Schoolyard Habitat**, Rowe Elementary/Rowe (8 teachers, 3 mtgs., 10 hrs.)

## **HOLYOKE CREATIVE SCHOOLS PROJECT GET OUT! Inquiry Science and Arts on the School Grounds (Grade 5):**

Feb. 24–June 16 Professional Development Workshop (6 teachers, 3 mtgs., 6 hrs.)  
Mar. 24–April 2 White School (2 teachers, 78 students, 31 hrs.)

April 6–16 Kelly School (2 teachers, 72 students, 31 hrs.)  
June 2–11 Sullivan School (2 teachers, 79 students, 31 hrs.)

## **NATURALIST-IN-RESIDENCE PROJECTS**

### **Heath Elementary School (Grades Pre-K–6 Using the Environment as an Integrating Context for Learning):**

Oct. 21–June 17 School Grounds Nature Investigation Field Trips  
(5 teachers, 90 students, 36 hrs., 24 sessions)

### **Northampton Elementary Schools (Grade K–5 School Grounds Nature and Science Study):**

Oct. 3–June 2 Professional Development Workshops/Curriculum Planning Sessions (40 teachers, 62 hrs., 31 mtgs.)

Nov. 24–June 18 Schoolyard Inquiry Modeling Sessions (47 teachers, 930 students, 104 hrs., 53 sessions)

### **P.E. Bowe School/Chicopee (Grade 2 Schoolyard Habitat Exploration Project)**

Sept. 29–Nov. 24 Fall Schoolyard Inquiry Modeling Sessions (3 teachers, 68 students, 24 hrs.)

## **AMHERST/PELHAM CREATIVE SCHOOLS PROJECT**

### **Emily Dickinson and a Sense of Place**

#### **Grade 2 Professional Development Workshop:**

Feb. 4 Exploring Nature Through Our Senses (8 teachers, 2 hrs.)

#### **Grade 2 Field Walks:**

April 17–June 8 Exploring Nature Through Our Senses (7 teachers, 140 students, 10 hrs.)

## **RENEWABLE ENERGY EDUCATION PROJECT**

Dec. 3 JFK Middle School/Northampton (Gr. 7–14)

Dec. 9 JFK Middle School/Northampton (Gr. 7–14)

Jan. 8 JFK Middle School/Northampton (Gr. 7–14)

Feb. 24 Hughes Academy Charter School/Springfield (Gr. 4–22)

Feb. 24 Hughes Academy Charter School/Springfield (Gr. 5–23)

Feb. 26 Hughes Academy Charter School/Springfield (Gr. 6–20)

Mar. 3 Hughes Academy Charter School/Springfield (Gr. 4–22)

Mar. 3 Hughes Academy Charter School/Springfield (Gr. 5–23)

Mar. 5 Hughes Academy Charter School/Springfield (Gr. 6–20)

Mar. 9 Hughes Academy Charter School/Springfield (Gr. 4–22)

Mar. 9 Hughes Academy Charter School/Springfield (Gr. 5–23)

Mar. 12 Hughes Academy Charter School/Springfield (Gr. 6–20)

## **SCHOOL PROGRAM STATS:**

No. of Children Served: 4577

No. of Field Trip: 137

No. of Classroom/School Visits: 106

No. of Teachers Trained: 347

No. of Schools Served: 40



# COMMUNITY PROGRAMS • FY09 SNAPSHOTS

## NATURE DISCOVERY PRESCHOOL



For over 20 years, the Nature Discovery Preschool program, developed by Hitchcock Center educator Colleen Kelley, engages young children's natural curiosity about their surroundings giving them many ways to investigate, navigate, and discover the mysteries of the natural world with their parents.

## SUMMER CAMP PROGRAM 2008



Under the direction of Hitchcock Center educator, Casey Beebe, over 120 children ages 6-11 participated in Summer Camp, combining fun outdoor learning experiences with recreation and exercise that encourages healthy living and healthy kids. Camp scholarships allowed 11 children from economically disadvantaged families to attend this year.

## MONARCH BUTTERFLY TAGGING



Hitchcock Center educator Jennifer Unkles attaches a coded tag on a butterfly as part of a citizen science project designed to help researchers better understand this amazing long-distance journey.

## FORT RIVER FESTIVAL



Approximately 40 paddlers explored some of the most picturesque areas of the Fort River between Amherst's Kiwanis Park and Groff Park. At Groff Park, participants were greeted with music, a family-fun rubber duck derby, and hands-on activities to help them learn more about this important water resource.





# COMMUNITY PROGRAMS • FY09 SNAPSHOTS

## FAMILY SATURDAY SCIENCE



On Saturday, December 12, 2008, Hitchcock Center educator Micky McKinley explored "Small Animals Up Close" with family members during Hitchcock Center's ongoing Family Saturday Science series.

## HENRY STREET SALAMANDER TUNNELS



A group of over 10 Hitchcock Center staff and volunteers cleaned out debris built up in the Henry Street Salamander Tunnels and mended the drift fences damaged over the winter in preparation of the annual spring migration of amphibians.

## OLD GROWTH FOREST PROGRAM



On May 30, 2009, Bob Leverett ("old growth forest evangelist of the east") led an interpretive hike through old growth forests at the Mohawk Trail State Park. His widespread travels have led to a large database of tree measurements and an encyclopedic knowledge of the significant remaining forests of the eastern U.S.

## SCHOOL VACATION CAMPS



Students attending the Spring Vacation Camp from April 20-24, 2009 helped to re-install ceramic butterfly tiles made by children at the Common School as part of a community service learning project that helped establish the Larch Hill Conservation Area's interpretive butterfly trail.





# COMMUNITY PROGRAMS • FY09 SNAPSHOTS

---

## BIRDING COURSES



We are proud to have Scott Sumner, one the state's top birders, share his expertise and knowledge with beginning, intermediate, and advanced birding students through his courses and workshops that are a regular part of the Hitchcock Center's ongoing natural history programs.

## WORKING TOWARD NET ZERO



On March 31, 2009, Mary Kraus of Kraus-Fitch Architects conducted a workshop for over 40 builders, homeowners, and others interested in working on solutions to climate change through net zero energy homes.

## *Special Thanks to our Community Program Underwriters*



*Integrity Development & Construction, Inc.*



*Kraus-Fitch Architects, Inc.*



*Teagno Construction, Inc.*

Through their generous support, Hitchcock was able to offer over 50 natural history & sustainability classes, workshops, and lectures, many at low or no-cost, to over 1600 Pioneer Valley residents.



# COMMUNITY PROGRAMS • FY09 SUMMARY

Our efforts to build sustainable communities can only succeed if future generations learn how to partner with natural systems to their mutual benefit and to do this people must become “environmentally literate.” We firmly believe that the concept of “environmentally literate” is one of the most powerful means for achieving a healthy, sustainable society.

(Numbers of people served are in parentheses.)

June 30–Aug. 15 **Summer Camp** (120)  
 Aug. 25 **Nature Trivia** (42)  
 Every Tuesday Sept.–May **Nature’s Storytime** (178)  
 Sept. 14 & 17 **Monarch Butterfly Tagging** (18 & 32)  
 Sept. 16–Nov. 28 **Homeschool: How Things are Made and the Energy it Takes to Make Them** (12)  
 Sept. 18 **An Evening Insect Concert** (12)  
 Sept. 19–Dec. 12 **Nature Discovery Preschool: Precious Plants** (20)  
 Sept. 20 **Fall Birding Sampler: Plum Island** (10)  
 Sept. 21 **Ferns at Mt. Toby** (7)  
 Oct. 4 **Fall Birding Sampler: Local Birding** (9)  
 Oct. 5 **How to be a Tourist in Your Hometown: A Workshop in Place-Based Writing** (6)  
 Oct. 12 **The 4th Annual Larch Hill English Style X-Country Classic** (75)  
 Oct. 16 **Changing Views of Earth History: Edward Hitchcock & the Dinosaurs** (30)  
 Oct. 18 **A Glimpse into the Sustainable World of Two Papua New Guinea Tribes** (17)  
 Oct. 23 **Pumpkin Carving Night** (18)  
 Oct. 24 & 25 **Enchanted Forest: Creatures of Our Forest** (300)  
 Nov. 2 **Fall Birding Sampler: Berkshire Lakes/Worcester Reservoirs** (6)  
 Nov. 8 **Saturday Family Science: All About Birds** (15)  
 Dec. 6 **Simple Gift Making** (18)  
 Dec. 13 **Saturday Family Science: Small Animals Up Close** (9)  
 Jan. 13–Feb. 17 **Winter Homeschool: Wild About Winter** (11)  
 Jan. 16–Feb. 27 **Nature Discovery Preschool: Winter Wonders** (21)  
 Feb. 5 **Film Screening—In Praise of the Earth: The Poetry of Wally Swist** (16)  
 Feb. 7 **Quabbin Winter Walk** (12)  
 Feb. 12 **The Voyage of Charles Darwin: How an Expedition, Scientific Collecting, and Keen Observations Changed the World** (42)  
 Feb. 14 **Saturday Family Science: Animal Tracking** (18)  
 Feb. 16–20 **Winter Vacation Camp** (45)  
 Feb. 24 **Film Viewing and Discussion—“The Power of Community: How Cuba Survived Peak Oil”** (15)  
 Feb. 25 **VEEC Lecture Series—The People’s Pint: A Model of Sustainable Business** (10)

Feb. 26–June 6 **Spring Birding Course** (23)  
 Feb. 28 **Tracking Predators and Prey: Coyotes and Turkeys** (11)  
 Mar. 5 **Hampshire College Ecology Club Presentation** (50)  
 Mar. 9 **What Would Nature Do? An Evening of Biomimicry** (14)  
 Mar. 14 **Saturday Family Science: Squirrels** (18)  
 Mar. 14 **Salamander Tunnels Maintenance Day** (7)  
 Mar. 17–Jun. 9 **Homeschool: Digital Ecology** (12)  
 Mar. 18 **Slideshow—Through the Seasons with Wildflowers** (29)  
 Mar. 20–June 12 **Nature Discovery Prehistoric Preschool** (24)  
 Mar. 31 **Working Towards Net Zero Energy** (30)  
 Apr. 7 **Reading and Booksigning—“Mount Toby Poems” by Wally Swist** (6)  
 Apr. 11 **Zoobilee! A Live Animal Fair** (68)  
 Apr. 14 **Presentation to Round the World Women** (50)  
 Apr. 18 **Birding by Ear** (3)  
 Apr. 20–24 **Spring Vacation Camp** (26)  
 Apr. 25 **Wildflower Photography** (3)  
 Apr. 25 **Trail Work Day** (1)  
 May 3 **Qigong—Spring Flow** (4)  
 May 9 **Old Growth Forest Excursion** (14)  
 May 9 **Whately Library Naturalists Walk** (23)  
 May 16 **Birding by Ear** (12)  
 May 28 **The Art and Technique of Landscape Photography** (13)  
 May 30 **Old Growth Forest Excursion** (20)  
 May 30 **Fort River Festival—Aquatic Critter Collection** (17)  
 June 6 **Pondering Ponds** (12)

## COMMUNITY PROGRAM STATS:

No. of Program Participants: 1622  
 No. Attending Adult Programs: 694  
 No. Attending Children Programs: 469  
 No. Attending Family Programs: 829  
 No. of Programs: 55



# OTHER NEWS

---

## **The Kendeda Fund Awards the Hitchcock Center \$100,000 for its Sustainable Building Project**

The Kendeda Fund has awarded a total of \$100,000 to fund Phase I of the planning and feasibility phase of the Hitchcock Center's sustainable building project. Half of this award, \$50,000, was conditional on the Center's ability to raise an additional \$50,000 from its donor support base. In FY09, the Hitchcock Center surpassed this goal by raising a total of \$58,000 from a select group of individuals who support the Hitchcock Center's building vision. We give a heartfelt thanks to the Kendeda Fund as well as to all those who helped us meet their \$50,000 challenge: Jan Albano, Penny Beebe, Andrew and Susan Bellak, Lisa Bertoldi, Jim Brassord, Jaana Cutson and Paul Rothenbery, Michael Dover and Rebecca Reid, Judith Espinola, Janice Gifford, Charlie and Susan Haight, Gordon Hall, Caroline Hanna, Martha Hoopes, John Kowelski and Erin Baker, Thomas Millette and Susan Alton, Rick Proctor, Mark Protti and Michell Sedor, Ann Romberger and Martha Ackman, Ken Rosenthal, Robert Saul, Eva Schiffer, Sonya Sofield, Dano Weisbord, Pete Westover.

## **Amherst College's Student Internship Program Benefits Hitchcock**

The Hitchcock Center was proud to participate in Amherst College's Partnership Program which provides students with internships, both nationally and internationally, with public service organizations identified as excellent internship opportunities by the College's Center for Community Engagement. Conor McDowell, a geology major who just completed his junior year, worked full-time over an 8 week period assisting the work of the Hitchcock Center's Green Building Committee by organizing a series of regional green building tours and completing a green building benchmarking report.



## **Hitchcock Center Launches Newspaper Column: Earth Matters**

In March of 2009, the Hitchcock Center began collaborating with the Daily Hampshire Gazette to publish a column every other Saturday on a wide variety of topics. Under the heading Earth Matters, we are drawing on the writing talents of Hitchcock staff and board members, along with local friends of the Center to provide an array of voices and perspectives. Beginning with Ted Watt's essay on the spotted salamander, the column has treated readers to such subjects as home energy conservation, the behavior of Eastern phoebes and American woodcocks, local biodiversity, the importance of children's outdoor play, and the joy of walking. Look for the column on the Outdoors page of the Weekend Gazette. And visit the Center's website for links to past columns. We give special thanks to Hitchcock Center Board member Michael Dover for serving as editor-in-chief for this column.

## **4th Annual Salamander Soirée a Great Success!**

On March 27, 2009, over 200 people gathered at Amherst College's Lewis-Sebring Commons for another evening of food, drink, entertainment, and fun. This year's Salamander Soirée was the best ever fundraiser, bringing in more than \$18,000 to support the Hitchcock Center's education programs. Music was provided by the Amherst Regional High School jazz combo, Jazz III, as we enjoyed the event's new location with more space and fine ambience. More than 90 businesses and local artists contributed everything from food and drink to raffle and auction items, and we thanked them in a large display ad that appeared in the Daily Hampshire Gazette and Amherst Bulletin. One of the highlights of the evening was a live auction of a baseball signed by the Boston Red Sox captain, Jason Varitek, donated by the team. Auctioneer Bill Hart kept the energy going by claiming that there were Yankee fans in the crowd who might do something dastardly if they won the bidding! Thanks to all who worked on and contributed to the event, and to all who attended. We look forward to seeing you all next year.



## **Prevention Magazine's "Picture of Health" Award Winner Colleen Kelley Raises \$5,000 for Environmental Education**

When Hitchcock environmental educator Colleen Kelley's daughter wanted to enter her into the Prevention Magazine's "Picture of Health" contest, Colleen's first reaction was "no way." But when she found out it could raise money to support her favorite charity, she decided to go for it. It is no surprise that Colleen won this contest which was conducted nationally by Prevention Magazine and ABC News Now to select women who lead exemplary lifestyles marked by healthy habits and a positive outlook. Nothing describes Colleen better being a "picture of health", from the way she cares for her community, her family, her body, and her profession... environmental education. And her favorite charity... the Hitchcock Center, of course. Thank you Colleen! You are inspiration to us all.



# ORGANIZATIONS, SCHOOLS & GROUPS

*Partnering with or Assisted by the Hitchcock Center for the Environment*

Academy Hill School, Springfield  
 Amherst College  
 Amherst College's Center for  
 Community Engagement  
 Amherst Montessori School, Amherst  
 Bement School, Deerfield  
 Big Brothers, Big Sisters  
 Biomimicry Guild  
 Blueberry Hill School, Longmeadow  
 Bramble Hill Farm  
 Bridge St. School, Northampton  
 Buckland-Shelburne Elementary School,  
 Shelburne Falls  
 Center School, Longmeadow  
 Colrain School, Colrain  
 The Common School, Amherst  
 Community Action  
 Conway Grammar School, Conway  
 Crocker Farm School, Amherst  
 Deerfield Elementary, Deerfield  
 E.N. White School, Holyoke  
 Earthwork Programs  
 Enchanted Circle Theatre  
 Five College Learning In Retirement  
 Fort River School, Amherst  
 Franklin Land Trust  
 Frederick Harris School, Springfield  
 Great Falls Discovery Center  
 Gill Elementary, Gill  
 Hampshire Bird Club

Hampshire College  
 Hampshire College Ecology Club  
 Hatfield Elementary School, Hatfield  
 Hawlemont Elementary School,  
 Charlemont  
 Heath School, Heath  
 Hughes Academy Charter School,  
 Springfield  
 Jackson Street School, Northampton  
 Kelly School, Holyoke  
 The Larch Hill Collaborative  
 Leeds Elementary School, Leeds  
 Little Cree Spy Excursions  
 Lincoln School, Springfield  
 Margaret C. Ells School, Springfield  
 Mark's Meadow School, Amherst  
 Mass Audubon, Arcadia Sanctuary  
 Massachusetts Cultural Council  
 Massachusetts Department of  
 Conservation and Recreation  
 Mount Holyoke College  
 New England Environmental Education  
 Association  
 New England Reptile Association  
 New England Wildflower Association  
 New Hingham Elementary School,  
 Chesterfield  
 Newton School, Greenfield  
 Northeast Sustainable Energy  
 Association

Norwottuck Rail Trail Group  
 P.E. Bowe School, Chicopee  
 Pelham School, Pelham  
 The People's Pint  
 Pepin School, Easthampton  
 Pioneer Valley Chinese Immersion  
 Charter School, Amherst  
 Pioneer Valley Planning Commission  
 Plains School, South Hadley  
 Pottenger School, Springfield  
 R.H. Conwell Elementary School,  
 Worthington  
 R.K. Finn Ryan Road School, Florence  
 Ridebuzz  
 Round the World Women, Amherst  
 Rowe Elementary School, Rowe  
 Rushing Rivers Institute  
 Sheffield School, Turner's Falls  
 Small Ones Farm  
 Smith Campus School, Northampton  
 St. Joan of Arc, St. George School,  
 Chicopee  
 St. Stanislaus, Chicopee  
 Stonyhill School, Wilbraham  
 Sullivan School, Holyoke  
 Sunderland Elementary, Sunderland  
 Tatham School, West Springfield  
 Town of Amherst Conservation  
 Department  
 Town of Amherst Energy Task Force  
 UMass Collaborative Teacher Education  
 Program  
 Under the Tree Music  
 U.S. Fish and Wildlife Service  
 United Way of Hampshire County  
 Valley Environmental Education  
 Collaborative  
 Ware Middle School, Ware  
 Warwick Community School, Warwick  
 West St. School, Granby  
 Whately Elementary School, Whately  
 Whately Public Library  
 White School, Holyoke  
 Wildwood School, Amherst  
 William E. Norris School, Southampton



Hitchcock Center educator Ted Watt with his homeschool group.

## SCHOOLS & ORGANIZATIONS STATS:

No. of Schools & Institutions: 58

No. of Org. & Groups: 33



# VOLUNTEERS

We are often asked how the Hitchcock Center accomplishes so much on such a tight budget—volunteers!! Our volunteers are our heroes. It is with our deepest gratitude and respect that we thank the many folks who give so generously of their time and energy. We could not do it without you!

## BIOTHON

Casey Beebe  
Penny Beebe  
Jaana Cutson  
Michael Dover  
Judith Espinola  
Elizabeth Farnsworth  
Janice Gifford  
John Green  
Martha Hoopes  
Julie Johnson  
Henry Lappen  
Dennis McKenna  
Rebecca Reid  
Paul Rothenberg  
Susan Smith  
David Spector  
Ted Watt  
Dano Weisbord  
Pete Westover

## BOARD OF DIRECTORS

Jan Albano  
Harvey Allen, *ex-officio*  
Penny Beebe  
Jim Brassord  
Jaana Cutson  
Michael Dover  
Judith Espinola  
Janice Gifford  
Charles Haight  
Caroline Hanna  
Bill Hart  
Aaron Hayden  
Martha Hoopes  
John Kowaleski  
Dennis McKenna  
Mark Protti  
Ann Romberger  
Bob Saul  
Sonya Sofield  
Dano Weisbord  
Pete Westover

## COMMUNITY PROGRAMS

Rema Boscov  
Alden Booth  
Bart Bouracious  
Dean Cycon  
Marianne Jakus  
John Kowaleski  
Mary Kraus  
Seal LaMadeleine  
Ken Lindsay

Tim McGee  
Magic Wings  
Anne Mileski  
Denise Passias  
Rich Pavlick  
Hannah Perlmutter  
Tony Reiber  
Lisa Rock  
Steve Sauter  
UMass SHARE  
Wally Swist  
Jennifer Unkles  
John Van de Graaff  
Amy Vickers  
Kate Wellspring  
Pete Westover  
Jay Whitney  
Elizabeth Wilda  
Philip Wittman  
Michael Zide

## ENCHANTED FOREST

Alpha Phi Omega  
Deborah Bazer  
Emmy Bean  
Penny Beebe  
Leslie Berger  
Leah Berlin  
De Boyd  
Grace Campbell  
Jon Chamutka  
Natalie Chamutka  
Tom Chamutka  
Sara Cooper  
Mary Gowins  
Nancy Dickinson  
Judith Espinola  
May Fydenkevez  
Janice Gifford  
Susie Gifford  
Cora Hirschfeld  
Mat Jacobson  
Susan Loring Wells  
Dennis McKenna  
Kathleen McKenna  
Dee McWilliams  
De Michel  
Chad Odwazny  
Hannah Shea  
Theta Chi  
UMass SHARE  
Jennifer Unkles  
Chris Warren

Hannah Warren  
Ted Watt  
Allegra Welly

## ZOOBILÉE!

Deborah Bazer  
Bart Bouricious  
Ann Bussler  
Mary Gowins  
Cora Hirschfeld  
Ann Mileski  
John Mileski  
Tom Mileski  
Amelia Ramsey Lefevre  
Al Richmond  
Hannah Warren

## OFFICE & SPECIAL PROJECTS

Deborah Bazer  
Ginny Brewer  
Vivienne Carey  
Mary Gowins  
Julie Gross  
Betty Jacobson  
Marianne Jakus  
Betsey Johnson  
Lia Karras  
Jerry Lalli  
Susan Loring Wells  
Carolyn Mathews  
Becky McNiven  
Anne Mileski  
Diane Murch  
Alice Partridge  
Russ Rakouskas  
Amelia Ramsey LeFebvre  
Paul Rothenberg  
Kate Sheely  
Sonya Sofield  
Kathleen Teagno  
Jennifer Unkles

## SALAMANDER SOIRÉE

Tiffany Beauchamp  
Lesley Breger  
Ali Decker  
Jade Gadowski  
Kristen Gifford  
Hitchcock Board of Directors  
Kathleen Koch  
Joan Langley  
Janet Lesniak  
Jennifer Lind  
Kathleen McKenna

Cristen Nagle  
Kathleen Rodrigue  
Paul Rothenberg  
Kate Sheely  
UMass Sigma Psi Zeta Sorority  
Sandra Widmer

## SALAMANDER TUNNEL

Deborah Bazer  
Isabella Dellolio and Family  
Eliza Gouverneur  
Paul Ita  
Jerry Lalli

## SUMMER CAMP

Leah Berlin  
David Haas  
Cora Hirschfeld  
Maia Callahan  
Malorie Letcavage  
Madeline Levine  
Noah Mishkind  
Dr. David Norton  
Rick Pavlick  
Jeff Reed  
Jack Saul  
Alex Sieracki  
Hannah Warren

## TRAIL & GARDENS

Gail Bielizna  
Chris Davis  
Jeffrey Essig  
Dotty Friel  
Norma Hallock  
Nina Hernandez-Breault  
Byron Koh  
John Kowaleski  
Jerry Lalli  
Mark Landeryou  
Robert Ludwig  
Jen Morrow  
Janet Price  
Lisa Rock  
Lorrie Roussi  
Fran Wahl

## VOLUNTEER STATS:

No. of Volunteers: 192

No. of Volunteer Hrs.: 4926

# CONTRIBUTOR & MEMBER LISTING

Many thanks to all the businesses, organization, and individuals whose generous support ensured our continued success. Our sincere apologies if your name is omitted or printed incorrectly. Please let us know so that we can correct our records. Thank You!

## BUSINESSES & INDIVIDUAL IN-KIND GIFTS

A 2 Z Science & Learning Store  
Adventure Outfitters  
A.J. Hastings  
Alice & Jane Allen  
Amherst Area Chamber of  
Commerce  
Amherst Brewing Company  
Amherst Cinema Arts Center  
Amherst Wines and Spirits  
Andrew's Greenhouse  
Antonio's Pizza  
Atkins Farms  
Deborah Bazer  
Berkshire Brewing Company  
Berkshire Design Group  
Big Y World Class Market  
Blue Heron Restaurant  
Carol Booth  
Boston Red Sox  
Les Campbell  
Chez Albert  
Dave Cimma  
The Claw Foot Tub  
CoCo Key Water Resort  
Courtyard Marriott Hotel  
Cushman Market & Café  
CVS Print Department  
Craig Della Penna, Realtor

Kaye Dougan  
Carol Duke  
Elements Hot Tub Spa  
Linda Fidnick  
Flower Hill Farm Bed & Breakfast  
& Retreat  
Food for Thought Books  
Fresh Side  
Steve Gilbert  
John Green  
Greenfield Solar Store  
Hadley Garden Center  
Charlie & Susan Haight  
Hampshire Athletic Club  
The Harp Irish Pub  
David Henion  
David Hooke  
Ruth Hooke  
Martha Hoopes  
Inn Nature Bed & Breakfast  
Jim's Package Store  
Laughing Dog Cyclery  
Les Trois Emme Winery  
Janet Lesniak  
Joan Levy  
Lone Wolf Restaurant  
The Loose Goose Café  
Marriot Courtyard  
Gale McClung  
Miss Saigon Restaurant

New England Environmental, Inc.  
Opa-Opa  
Panda East Chinese Restaurant  
Peoples Bank  
The People's Pint  
La Piazza Ristorante  
Pilates Center of Western  
Massachusetts  
Pioneer Arts Center of  
Easthampton  
Pioneer Valley Symphony  
Sarah Prince  
The Pub  
R&P Liquors & Fine Wines  
Rebecca Reid  
Russell's Package Store  
Bob Saul  
State Street Wines & Spirits  
Mike Suchinecz,  
Massage Therapist  
Tabella Restaurant  
The Toy Box  
Trader Joe's  
Trailside Bicycles  
UMass Fine Arts Center  
La Veracruzana Mexican  
Restaurant  
Vermont Institute of  
Natural Science  
Wendi Weinberg Acupressure  
Whole Foods Market  
Yoga Center of Amherst  
Zanna  
Zoar Outdoor

Kamins Real Estate  
Kraus-Fitch Architects  
Kuhn Riddle Architects  
Mt. Tom Vet Service/Holyoke  
Animal Hospital  
New England Environmental, Inc.  
Northampton Cooperative Bank  
Pelham Auto Service  
Prevention Magazine  
Seewald, Jankowski, &  
Spencer, P.C.  
Sinauer Associates, Inc.  
Singer Potito Associates  
Stakeholders Capital, Inc.  
Sumner Heating Company, Inc.  
Teagno Construction, Inc.  
TechCavalry

## FOUNDATIONS & TRUSTS

Community Foundation of  
Western Massachusetts  
Proteus Fund  
United Way of Hampshire  
County  
Kendeda Fund

## NONPROFIT ORGANIZATIONS & PUBLIC AGENCIES

Amherst Department of Public  
Works  
Five College Learning in  
Retirement  
Garden Club of Amherst  
Gill-Montague Education Fund  
Hands Across the Valley Quilters  
Guild  
Massachusetts Cultural Council  
Mass Technology Collaborative  
Montague Center School PTO  
Museum Institute for  
Teaching Science  
Northampton Education Fund  
Ryan Road School PTO  
United Way of Hampshire  
County  
United Way of Pioneer Valley  
Wings! Chorus

## CORPORATE & BUSINESS GIFTS

Amherst Farmers Supply  
Anonymous II  
Berkshire Design Group  
Blair, Cutting & Smith Insurance  
Bulkley, Richardson and Gelinaz  
J.F. Conlon & Associates  
Conservation Works, LLC  
Florence Savings Bank  
Grantham, Mayo, Van  
Otterloo & Co.  
Greenfield Savings Bank  
Integrity Development &  
Contruction, Inc.



Dean Cycon, founder of Dean's Beans, an organic and fair trade coffee business, talks about ecological and social justice concerns in the coffee trade.



### **SCHOLARSHIP FUND**

Kenneth & Lauren Holt  
Ruth Hutton & Robert Brainin  
Fred Lauing  
Susan Loring-Wells &  
Marty Wells  
Molly Maland  
Russ & Jan Odwazny  
Joanne Parker & Robert Wilce  
Kate Queeney &  
John Staudenmayer  
Laura Sizer  
Fred & Shelley Treyz  
Jennifer & Steve Unkles  
Wings! Chorus

### **MEMORIAL GIFTS**

*Gifts were given in memory of:*

#### **Brent Beebe by:**

Fred Lauing  
Molly Maland  
Russ & Jan Odwazny

#### **Benson Bowditch by:**

Jane Carnes  
Janet Costanzo  
Sydney Dinsmore  
N.T. & Joanna Griscom  
Hands Across the Valley  
Quilters Guild  
Charles & Joyce Ketcham  
George McCormack  
Shelly Meyer Arnold &  
Ben Arnold  
Dorthea Nelson  
Peter & Rita Rozantes  
Anne and Robert Weaver  
Nancy & Don Wise  
Tracy Zafian & David Schmidt

### **HONORARY GIFTS**

*Gifts were given in honor of:*

#### **Ann Wightman &**

#### **Mal Bochner by:**

Mrs. Marion Bochner

### **BUILDING FUND**

Janice & Louis Albano  
Anonymous I  
Anonymous II

Penny Beebe  
Andrew Bellak  
Lisa Bertoldi  
Jim Brassord  
Jaana Cutson & Paul Rothenberg  
Michael Dover  
Judith Espinola & Susan Perry  
Janice Gifford  
Grantham, Mayo, Van  
Otterloo & Co.  
Charlie & Susan Haight  
Caroline Hanna  
Martha Hoopes & Eve Eichwald  
John Kowaleski & Erin Baker  
Mark Protti & Michelle Sedor  
Ann Romberger &  
Martha Ackmann  
Bob Saul & Katie Fretwell  
Eva Schiffer  
Sonya Sofield  
Dano Weisbord & Annie Leonard  
Pete Westover

### **ANNUAL FUND \$1,000+**

Garden Club of Amherst  
Janice Gifford  
Steven Gilbert  
Prevention Magazine  
Sinauer Associates, Inc.

### **ANNUAL FUND \$500-\$999**

Rema Boscov  
Jaana Cutson & Paul Rothenberg  
Betsey & Chad Johnson  
Micky McKinley & Samuel Green  
Margaret & Alan Robinson  
Susan Smith  
Mary Taft & Leslie Smith  
Richard & Nathalie Woodbury

### **ANNUAL FUND \$250-\$499**

Janice & Louis Albano  
Jane & Steven Brown  
Michael Dover  
Judith Espinola & Susan Perry  
Jim Lafley & Sharon Wood  
Betsy Loughran  
Russ & Jan Odwazny  
Ann Romberger &  
Martha Ackmann

Dr. Alice Rossi  
Bob Saul & Katie Fretwell  
David Sloviter  
Judith Smith & Kenyon Fairey

### **ANNUAL FUND \$100-\$249**

James & Marjorie Abel  
Sandra & Frank Acebo  
Nancy Archer  
Elizabeth Aries & Richard Berman  
James Babson  
Helga Beatty  
Penny Beebe  
Peter & Ellen Berek  
Carol Booth & Linda Fidnick  
Karen Bourque  
Jim Brassord  
Joanna Brown  
Anne & Michael Cann  
George & Cheryl Cobb  
Sabina Cournoyer  
Cheri Cross  
Sydney Dinsmore  
Paul Dobosh  
Eve Eichwald  
Ruth Elcan  
Elizabeth Farnsworth &  
Aaron Ellison  
Rachel Fink & Tom Dennis  
Jean & Carl Fiocchi  
John Gerber  
N.T. & Joanna Griscom  
Julie & David Gross  
Charlie & Susan Haight  
Lee Hall  
Caroline Hanna  
Martha Hanrott  
Bill & Vickie Hart  
James & Jacquelyn Hickey  
David Hoopes  
Helen Hoopes  
Rachel Hoopes  
Nancy MacMillan Hoopes &  
Alison Laura Pachynski  
Estate of Thelma J. Isaacs  
John Kowaleski & Erin Baker  
Don & Melissa Kroodsma  
Peter & Kate Lamdin  
Janice & Robert Lefebvre

Stacy Lennard &  
Stephen Saxenian  
Paul & Marcelle Lipke  
Bridgit & Jerry Litchfield  
Frank & Eleanor Manire Gatti  
Lynn Margulis  
Michelle Markley  
Dennis & Kathleen McKenna  
Alice Mertz  
Will Millard  
Thomas Millette & Susan Alston  
Sally Montgomery  
Anne Morehouse &  
Mary Hulbert  
Richard & Alice Morse  
Dorthea Nelson  
John & Rose Olver  
Joanne Parker & Robert Wilce  
Mark Pecker & Elizabeth McGee  
Susan Perry  
Lorna & Dale Peterson  
Victoria Pillard &  
Jerry Koch-Gonzalez  
Kinga Pluta & Michael Rosenblum  
Anne Robbins  
Steve Roof  
Stephanie Sandler & Austin Sarat  
Eva Schiffer  
Marybeth Shapiro  
David Spector & Magda Bechar  
Diane Steingart &  
Jonathan Woodbridge  
Hariharan Swaminathan  
Alice Swift  
Kathleen & Don Teagno  
Jean Toulouse  
Pamela Victor & Jeffrey Hausthor  
Miriam Whaples  
Staunton Williams, Jr.  
Jan & Bob Winston  
Nancy & Don Wise

### **ANNUAL FUND Up To \$99**

Doug Adler  
Harvey Allen  
Appelbaum Holladay Family  
David Arfa & Kim Erslev  
Doris Atkinson  
Sarah Bacon

## **SPECIAL THANKS**

### **To those who made multi-year gifts to the Hitchcock Center:**

Dottie Barnes, Penny Beebe, Karen Bourque, Jane Brown, Jaana Cutson & Paul Rothenberg, Judith Espinola & Susan Perry, Janice Gifford, Steven Gilbert, Charlie & Susan Haight, Jim Lafley & Sharon Wood, Guy Lanza, Lynn Margulis, Alexander & Harriet Pollatsek, Ann Romberger & Martha Ackmann



Nancy Bair  
 Joanna & Daniel Ballantine  
 Dorothy Barnes  
 Deborah Bazer & Lahri Bond  
 Ann Benson & Iris Harrell  
 Carol Berner  
 Shirley Bertrand  
 Catherine Bickford & Bob Cann  
 Mrs. Marion Bochner  
 Leslie & Dwayne Breger  
 Jesse Brownback III  
 Cynthia & Jerry Brubaker  
 Debin Bruce  
 Jill Bubier  
 Nancy & Bill Buchanan  
 Carmelina Lorusso  
 Jane Carnes  
 David Chernock  
 Cathy & Joe Cohen  
 Roger Conant  
 Janet Costanzo  
 Brian Costello  
 Ruth Courtneil  
 Abigail Dallmann  
 Charlene D'Avanzo  
 Judith Davidov  
 Joan Davis  
 Kathleen Davis  
 Andree Demay  
 David Ahlfeld & Victoria Dickson  
 Mark Dooley &  
   Cathryn Brubaker  
 Wilhelmina Eaton  
 John Ebbets  
 Michael & Beatrice Eichwald  
 Brenda Ewing  
 Barbara Fischer  
 Robert & Sally Fitz  
 Tom Flittie & Janet Lansberry  
 Susan & Michael Frazier  
 Elizabeth Gardner &  
   James Poulsen  
 Judy Gatland & Jon Lord  
 Helen Gibson & James Uguccioni  
 Margot Gifford  
 Penny Gill  
 Deborah Gilmour  
 George & Ellen Goodwin  
 Joel & Pamela Gordon  
 Michele Granda  
 Ginny Graves  
 John Green  
 Anita & Thayer Greene  
 Louise & Ron Grosslein  
 Sylvia Halkin  
 Hands Across the Valley  
   Quilters Guild  
 Amy Harper  
 Aaron Hayden  
 Marnie Henneman  
 Sara Hills  
 Doris Holden

Margaret Horsnell  
 Paul Jacobs & Jennifer Swender  
 Peter Jessup &  
   Maureen Humpage  
 Mark & Sandy Johnson  
 Ann Kearns & Mary Hocken  
 Sue & Elliott Kelly  
 Diane Kelton  
 Marian Kent & Aaron Meuse  
 Charles & Joyce Ketcham  
 Mary Kohler  
 Mary Kraus & John Fabel  
 Bill Lafley & Kim Noyes  
 Scott Laidlaw & Carrie Cuthbert  
 Henry Lappen  
 Lello Smith Family  
 Nancy Leonard  
 Tom Gardner & Karen Levine  
 Susan Lewandowski  
 Jennifer Lind  
 Linda L. Bird  
 Ken & Sylvia Lindsay  
 Farnsworth Lobenstine  
 Susan Loring-Wells &  
   Marty Wells  
 Robin Luberoff  
 Nancy Luce  
 Lucy Wilson Benson  
 James Macallister  
 Winnifred Manning  
 Marge Mathews  
 Gale McClung  
 George McCormack  
 Emily & John McDermott  
 Kathleen McGarry

Shelly Meyer Arnold &  
   Ben Arnold  
 Richard & Edith Minear  
 Barbara & Harry Morgan  
 David Mullins  
 Diane & Laurence Murch  
 Jessica Murphy  
 Michael Newman  
 Patty O'Donnell & Rick Gerstein  
 Lisa Oram & Steven Brown  
 Carlos & Janet Ortiz  
 Don O'Shea  
 Barbara Pavlou  
 Elizabeth Pols & Sean Tarpey  
 Tish Poulter  
 Mark Protti & Michelle Sedor  
 Elizabeth Pyle  
 Patricia Ramsey  
 Jane Rathbun  
 Nancy & David Ratner  
 Katharine Reichert &  
   Margaret Frerichs  
 Lola Reid  
 Rebecca Reid  
 Julie Rice DeWalt  
 Donna Rickerby  
 Michael Robinson  
 Trevor & Laura Robinson  
 Joshua Rosenthal  
 Rona Rothenberg &  
   Don Benander  
 Peter & Rita Rozantes  
 Carlos & Mary Santiago  
 Lauret Savoy  
 Karen Smith & Chris O'Carroll  
 Lynette Smith & Linda Chalfant

Sonya Sofield  
 Judith Solsken  
 Helena Spector  
 Amy Springer  
 Otto & Diana Stein  
 Richard & Judith Stein  
 Representative Ellen Story  
 Scott Turner & Valerie Miller  
 Sarah Thomson  
 Barbara Tiffany  
 Nancy & Phillip Torrey  
 Fred & ShelleyTreyz  
 Jacqueline & Robert Tuthill  
 Meg & Peter Vickery  
 Fran Wall & Byron Koh  
 Chris Warren  
 Paige Warren & Lynn Adler  
 Sally Watson Menkel  
 Anne & Robert Weaver  
 Beverly Weeks  
 Robert Weisbord  
 Dano Weisbord & Annie Leonard  
 Marvin Weisbord &  
   Dorothy Barclay Weisbord  
 Paul & Victoria Wildman  
 Dyan Wiley  
 Jessica & Eric Wilkinson  
 Mary Alice & Brayton Wilson  
 Nancy Wilson & Nicholas Simms  
 Lyons Witten & Laura Fitch  
 Craig Woodward  
 Tracy Zafian & David Schmidt  
 Erika Zekos & Derek Noble  
 Cheryl Zoll & Eric Sawyer  
 Julie Zuckman & Peter Haas



Kids exploring the Fort River in early spring.



**MEMBER SUPPORT —  
LARCH TREE (\$250+)**

Russ & Jan Odwazny  
Harriet & Alexander Pollatsek

**MEMBER SUPPORT —  
RED OAK (\$100+)**

Carol Berner  
Peter Blier & Patty Blauner  
Anne & Michael Cann  
Jaana Cutson & Paul Rothenberg  
Ruth Elcan  
Elizabeth Farnsworth &  
Aaron Ellison  
Julie & David Gross  
Bernadette & Emlen Jones  
Bonita & Robert Krotkov  
Ken & Joan Langley  
Louise Hammann  
Arthur & Elaine Mange  
Carolyn & Richard Mathews  
Mary Ann Nessel  
Carlos & Janet Ortiz  
Lisa Plantefabar & Steve Fischel  
Polino Family  
Dr. Alice Rossi  
Cheryl Zoll & Eric Sawyer  
Mark Protti & Michelle Sedor  
Spirko Family  
Dorothy Swanson  
Dano Weisbord & Annie Leonard

**MEMBER SUPPORT —  
WHITE PINE (\$75+)**

Penny Beebe  
The Common School  
Christopher Eliot &  
Patricia Stuart  
Patrica Finley  
Santangelo Giles Family  
Bill & Vickie Hart  
Paul Jacobs & Jennifer Swender  
Rhett & Susan Krause  
Sonia Krotkov & Scott Norris  
Amity & Scott Lee-Bradley  
Anne Lombard  
Dennis & Kathleen McKenna  
Charles & Kay Moran  
Redding Siegelman Family  
Jon Child & Liz Rosenberg  
Austin Sarat & Stephanie Sandler  
Hubbard & Linda Smith  
Hubbard & Linda Smith  
Fred Vanderbeck &  
Nancy Birtwell  
Alice Ward

**BASIC MEMBERSHIP**

Robert & Inge Ackermann  
Doug Adler  
David Ahlfeld & Victoria Dickson  
James Hafner & Kelly Aiken  
Janice & Louis Albano

Craig & Emily Allen  
Harvey Allen  
Alper Family  
Erika & Alfred Alschuler  
Sandra & Tom Alworth  
Michele & Gavin  
Cooke-Andresen  
Mike & Barbara April  
David Arfa & Kim Erslev  
James & Judith Averill  
Andrea & Jacob Ayyazian  
Lois Barber  
Rachel Barker & Family  
Tina Barsby  
Mira Bartok  
Deborah Bazer & Lahri Bond  
Helga Beatty  
Nel Beaudry  
Carla Becker & Family  
Andrew Bellak & Susan Bain  
Bill Benner & Joe Wicinski  
Jason Benson & Elizabeth Royalty  
Peter & Ellen Berek  
Michael & Tina Berins  
Aaron Berman & Amy Mittelman  
Lisa Berry & Family  
Glen & Clare Bertrand  
Magdalena Bezanilla &  
Wei-Lih Lee  
Catherine Bickford & Bob Cann  
Anthony Bishop & Seunghee Cha  
Katherine Blake  
Gary Booth  
Rema Boscov  
Steven Botkin & Joan Levy Family  
Barbara Boulanger & Family  
Karen Bourque  
Elaine Bowditch  
Dennis Bowen & Elizabeth Pyle  
Bozek Family  
Audrey Bozzo  
Jim Brassord  
Leslie & Dwayne Breger  
Ginny Brewer  
Marybeth Bridegam  
Nancy & Jerome Brightman  
Renae Brodie & Family  
Shannon & Mike Brooks  
Elizabeth Brown  
Kevin Brown & Family  
Sarah Dixwell Brown  
Jesse Brownback III & Family  
Mark Brownell  
Cynthia Brubaker & Family  
Nancy & Bill Buchanan  
Kerry & Cecelia Buckley  
Burland Family  
Brenda Bushouse &  
Charles Schweik  
Sam & Ian Camera  
Cheryl Campbell Levine & Family  
Elisa Campbell

Claire Carlson & Jack Czajkowski  
Madeline Casey &  
Georgette Defriesse  
Elaine Cat & Richard Loomis  
Ton-Shun & Beverly Chang  
Matthew Charity & Family  
David Chernock & Family  
Su-Chuan Chung & Family  
Jeanne Clayton  
Eugenia Clerico & Family  
Michael & Noreen Cmar Mascis  
David & Carolyn Collette  
Arianna Collins &  
Frank Grindrod  
Patricia Collins & Family  
Rachel Connelly & Family  
Rachel Conrad & Tom Rooney  
Christine Cooley & Family  
Sara Cooper & Jon Chamutka  
Janet Cornell  
Sally Crawford & Jane Porter  
Wayne Crouch  
John & Marilyn Cushing  
Tanya Cushman & Family  
Stacy Troy & Lori Damato  
Cathy A. Darcy  
Donald David  
Judith Davidov  
Neil Davidson  
Kathleen Davis  
Isabella Dellolio & Family  
Corinne Demas  
Jennifer Dempsey & Thomas May  
Tom & Sheila DeSellier  
Julie Rice DeWalt & Family  
Rory Dexter & Family  
Carol Dick  
Sally Dillon  
Philip & April Doherty  
Claudia Donald & Howard Rhett  
Gary & Linda Donnelly  
Mark Dooley &  
Cathryn Brubaker  
Emily Douglas  
Sierra & Mark Dunn  
Carl & Juliana Dupre  
Wilhelmina Eaton  
Richard & Maryalice Eckart  
Nancy Eddy  
Kleinman Eddy Family  
Dvora Eisenstein & Family  
Susan & Wayne Emerson  
Paul & Deborah Engel  
Sarah English & Family  
Judith Espinola & Susan Perry  
Martin Espinola  
George Karras & Jeanne Esposito  
Amanda Ewington & Family  
Frances Fairchild  
Andy & Sally Fairfield  
Mary Fanelli  
Chris & Todd Felton



Gordon & Melanie  
Fletcher-Howell  
Rachel & Jay Flint  
Simone Flynn &  
Andrew Campbell  
AnneMarie Foley & Family  
Robin Fordham & William Miller  
Karen Foss & Dave Wells  
Susan & Michael Frazier  
Jeanne Friedman &  
Carol-Ann Smalley  
Stephanie & Christian Friedrich  
Judy Gatland & Jon Lord  
Catherine Gaynor  
Peter May & Eleanor Gellman  
Helen Gibson & James Uguccione  
Kimberly Gillette & Family  
David Glassberg & Alice Nash  
Catherine Gobron &  
Mark Caputo  
Dorie Goldman & Family  
Lori Goldner & Family  
Beth Goldstein &  
Richard Conner  
Alan Goodman & Family  
Nancy Goodman & Family  
Kat Good-Schiff  
Eliza Gouveneur & Family  
Max Graff & Family  
Robert Graham & Judi Pierce  
Carol Gray & Jeff Lee  
Diane & Ned Gray  
Robert Greenberg  
Greene Perkins Family  
Louise & Ron Grosslein  
Susan & Charlie Haight  
Louise Harper  
Patricia & Ash Hartwell  
Lisa Harvey & David Arnold  
Lynn Hatch  
Bob Hawley & Mary McCarthy  
Carol Heim  
Steven & Maria Heim  
Sheri Heitker & Mark Dixon  
June Henneman  
Marnie Henneman  
Kevin Herlihy & Family  
Sara Hills  
Alia Hinds  
Polly Ingraham &  
Robert Hirschfeld

Mary Hocken & Ann Kearns  
 Anne & Chris Hoffmann  
 Doris Holden  
 Helen Holly & Family  
 Martha Hoopes & Eve Eichwald  
 Emma Howes  
 Betsy Howlett  
 Mary Hoyer  
 Judah & Kim Hughes  
 Ruth Hutton & Robert Brainin  
 Ruthie Ireland & Family  
 Naoko Ishide & Ryan Scott  
 Scott Jackson & Chris Sarfaty  
 Barbara & John Jemsek  
 Miriam & John Jenkins  
 Betsey & Chad Johnson  
 Julie Johnson  
 Kyle Johnson  
 Teresa Jones  
 Keith & Julie Kaneta  
 Jacquelyn & Eugene Kang  
 Nere Kapiteni  
 Meghan Keane & Family  
 Mary Hocken & Ann Kearns  
 Andrea Keins & Family  
 Larry & Donna Kelley  
 Elizabeth & John Kelley  
 Devon Kelting & Family  
 Diane Kelton  
 Christopher & Mary Kiely  
 Shoshona & David King  
 Mary Kohler  
 Richard Konicek &  
 Kathleen Moran  
 Brian & Jennifer Konieczny  
 Ellen Kosmer  
 John Kowaleski & Erin Baker  
 Anne Kusiak  
 Catharine Lafleur  
 Jim Lafley & Sharon Wood  
 Peter & Kate Lamdin  
 Susan Landau & Neil Immerman  
 Mark Landeryou &  
 Katie McDermott  
 Tom Flittie & Janet Lansberry  
 Susan Leary & Family  
 Janice & Robert Lefebvre  
 Nancy Leonard  
 Tom Gardner & Karen Levine  
 Louise & Jay Levy  
 Susan Lewandowski  
 Tanya Lieberman  
 Kirsten Lindblom &  
 Jay Baudermann  
 Ken & Sylvia Lindsay  
 William & Ellen Brout Lindsey  
 Paul Lipman & Dulcie  
 Anne Lombard & Family  
 Deborah Long & Family  
 Susan Loring-Wells &  
 Marty Wells  
 Betsy Loughran

Robert Ludwig  
 Carol Lynch & Family  
 Robert & Karen Mack  
 Cynthia Magelinski  
 Dorothy & Owen Malon  
 Diane Anci & Joseph Mangine  
 Frank & Eleanor Manire Gatti  
 Carol & James Marcum  
 Carol Mardeusz  
 Ann Marshall & Michael Hanke  
 Jacob Masenior &  
 Heather Punska  
 Andrea Massar & Family  
 Cecilia & Dennis Mathewson  
 Gale McClung  
 Peg McDaniel  
 Emily & John McDermott  
 Tim McGee & Family  
 Pat McGiffin  
 Roy & Becky McNiven  
 Malcolm Meltzer  
 Marcia Merithew & Family  
 Joyce Merriam  
 Dotty Meyer  
 Mary & Frank Meyers  
 Joan Milam & David King  
 Richard & Edith Minear  
 Elaine Mishkind  
 Kimberly & Christopher Misra  
 Priscilla Moor  
 Judith & Matthew Moran  
 Monica Moran & Bill Wehrli  
 John Morgan & Pamela Wilkinson  
 Eleanor & Harold Mosher  
 John Moss  
 David Mullins  
 Diane & Laurence Murch  
 Jessica Murphy & Family  
 Ladimer & Anna Nagurney  
 Rebecca Neher  
 Kris Nelson & Family  
 Patricia Nicolson  
 Kathleen & Jerome Norton  
 Anne Novosel-Mileski &  
 James Mileski  
 Melissa O'Brien &  
 Oliver Doisneau  
 Amber O'Reilly & Family  
 Benjamin & Katherine Osborne  
 Joanne Parker & Robert Wilce  
 Pam Parkhurst  
 Patty O'Donnell & Rick Gerstein  
 Beverly Pead  
 Joe & Judy Pistrang  
 Kinga Pluta & Michael Rosenblum  
 Caryl-Rose Pofcher  
 Tish Poulter  
 Kate Queeney &  
 John Staudenmayer  
 Sheila Rainford  
 Kathleen Raymond  
 Clifton & Arleen Read

Katharine Reichert &  
 Margaret Frerichs  
 Rebecca Reid & Michael Dover  
 Deborah Reiter  
 Rene Reyes &  
 Jessica Wolpaw Reyes  
 Nichole & Jeffrey Reynolds  
 Grace Rhodes & Natalie Drake  
 Steve & Susan Rice  
 Donna Rickerby  
 Anna & Steven Robbins  
 Katherine Robinson Kurpaska  
 & Family  
 Christine Robinson  
 Ann Romberger &  
 Martha Ackmann  
 Chrystel Romero & Family  
 Andra Rose & Joshua Goldstein  
 Caren Rotello & Family  
 Elissa Rubinstein  
 David Rundle &  
 Catherine Huntley  
 Brian Sabel & Karen Lederer  
 Linda Samano & Family  
 Carlos & Mary Santiago  
 Lauret Savoy  
 Sharon & Jon Schiller  
 Lisa & Leigh Schmitt  
 David Schneider & Klara Moricz  
 Brian Schultz  
 Nora Schwartz-Martin &  
 James Martin  
 Holly Perry & Jim Seltzer  
 Helen Ann & Graeme Sephton  
 Sarah & Keith Shields  
 Jill Sherman  
 Sieracki Family  
 Marc & Carol Silver  
 Laura Sizer & Family  
 Corinne Smith  
 Bob Snope & Linda Henry  
 Mary & Dana Snyder  
 Rob Snyder & Louisa Hall  
 Will Snyder & Laura Muller  
 Sonya Sofield  
 Judith Solsken  
 David Spector & Magda Bechar  
 Patrick Kelly & Cynthia Spell  
 Amy Springer  
 Diana & Otto Stein  
 Richard & Judith Stein

Laura Wenk & Judy Stern  
 Robert Stern & Judith Glaser  
 Charles Stevenson  
 Representative Ellen Story  
 Stephanie Strand & Family  
 Amy Struzziero & Family  
 Kelly Sturtevant  
 Susan Wennemyr & Family  
 Deborah Swan & Family  
 Amy Sweeting & Family  
 Alice Swift  
 Kathleen & Don Teagno  
 Craig Martin &  
 Lynmarie Thompson  
 Nancy & Phillip Torrey  
 Kathleen Traphagen &  
 Khalid Elkalai  
 Carol Trosset  
 Jacqueline & Robert Tuthill  
 Rick & Jeanne Tuthill  
 Jennifer & Steve Unkles  
 Tim Van Egmond & Gale Kuhn  
 Katharine & Tyll van Geel  
 Juliana Vanderwielen  
 Fran Vantreesse & Family  
 Donald Verrastro & Heidi Dollard  
 Amy Vickers  
 Meg & Peter Vickery  
 Jeffrey Hausthor & Pamela Victor  
 Fran Wall & Byron Koh  
 John Wallace  
 Kathleen Wang & Richard Alcorn  
 Beverly Weeks  
 Karl Martini & Cynthia Weigel  
 Kathy Weilerstein & Family  
 Cathy Whately & Family  
 Paul & Victoria Wildman  
 Christopher Williams & Family  
 Josef Wille & Suzanne Parker  
 Staunton Williams, Jr. & Family  
 John Willoughby & Abbie Jensen  
 Brayton & Mary Alice Wilson  
 Michelle Wolf & Family  
 Rosalind Yanishevsky  
 Julianne & Matthew Yanko  
 Catherine Youngen  
 Laurie Zacek & Family  
 Erika Zekos & Derek Noble  
 Erik Zimmerman &  
 Maureen Millea  
 Chris & Katie Zobel

#### CONTRIBUTOR & MEMBER SUPPORT STATS:

No. of Businesses: 84

No. of Foundations & Trusts: 4

No. of Organizations/Public Agencies: 14

No. of Donor Households: 286

No. of Member Households: 422

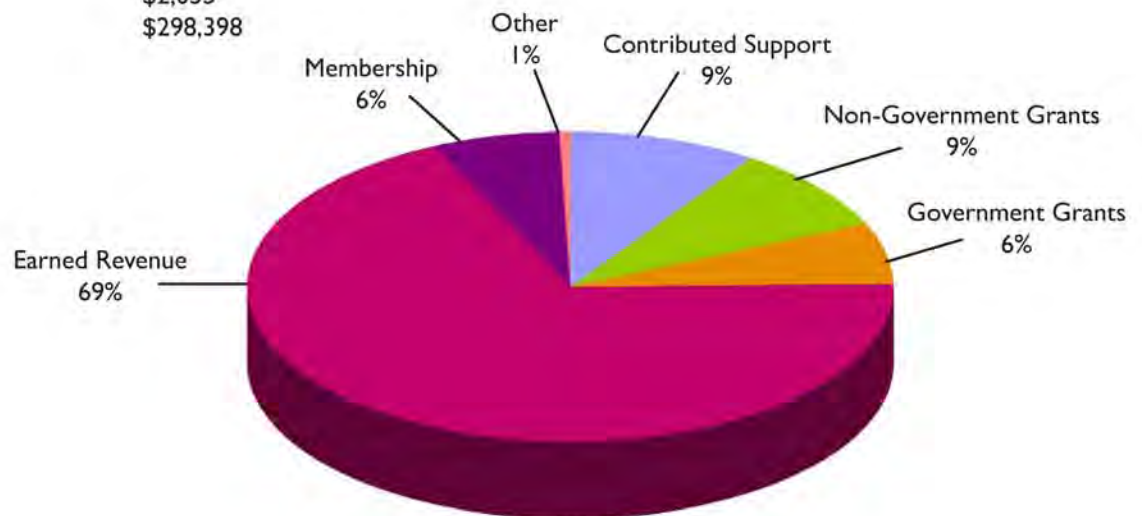


# FINANCIAL REPORT

---

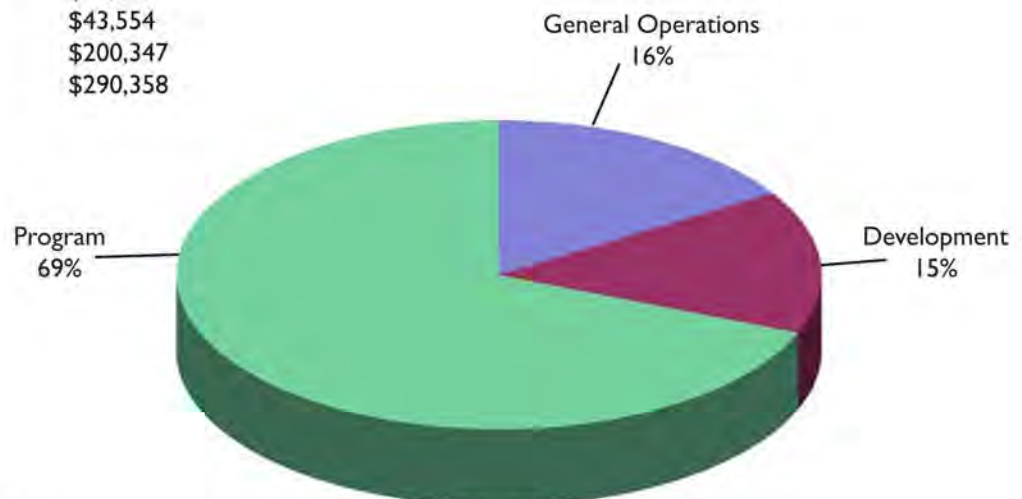
## REVENUE

Contributed Support	\$27,858
Non-Government Grants	\$27,000
Government Grants	\$18,900
Earned Revenue	\$204,320
Membership	\$18,265
Other	\$2,055
<b>TOTAL</b>	<b>\$298,398</b>



## EXPENSE

General Operations	\$46,457
Development	\$43,554
Program	\$200,347
<b>TOTAL</b>	<b>\$290,358</b>



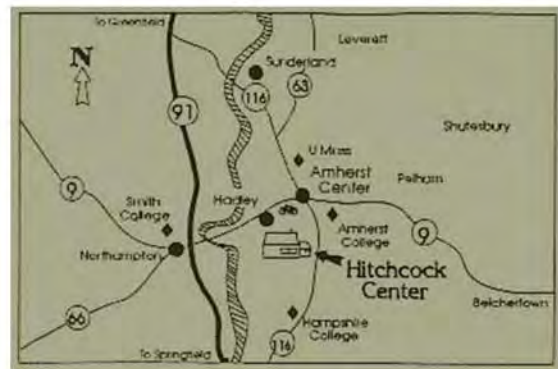
**Based on unaudited figures.**

The Hitchcock Center for the Environment is a 501(c)(3) nonprofit organization.

Hitchcock Center for the Environment  
at Larch Hill Conservation Area  
525 South Pleasant Street  
Amherst, MA 01002



## Come Visit Us!



**PUBLIC HOURS:** Tuesday–Friday, 9 a.m.– 4 p.m.

**PHONE:** (413) 256-6006

**WEBSITE:** [www.hitchcockcenter.org](http://www.hitchcockcenter.org).

*Trails are open to the public  
during daylight hours.*